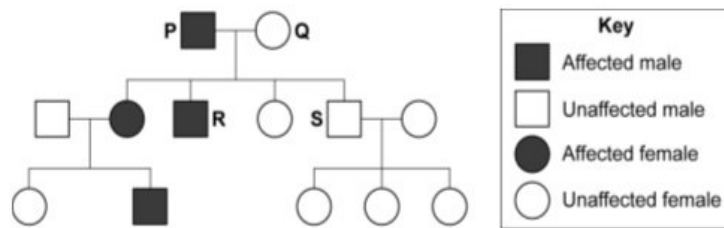
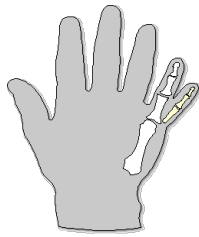


- 1 Sometimes babies are born with extra fingers as shown in the diagram.
This condition is called polydactyly.



The diagram also shows the inheritance of polydactyly in a family.

- 1 (a) Polydactyly is caused by a dominant allele, **D**.
The recessive allele of the gene is represented by **d**.

Use **one** genetic diagram to show the inheritance of the polydactyly gene by **R** and **S**.

(4 marks)

Login or subscribe to [my-GCSEscience.com](https://www.my-GCSEscience.com) to see the answers and commentary.