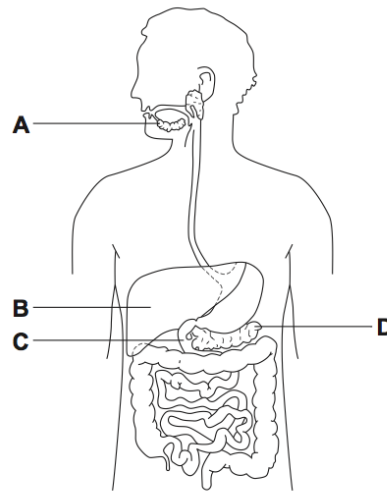


1. The diagram gives information about some parts of the human digestive system.



1 (a) Name the parts of the digestive system labelled A, B, and D. (C is labelled for you)

A Salivary glands [1 mark]

B Liver [1 mark]

C Duodenum

D Pancreas [1 mark]

(3 marks)

1 (a) (i) Name the organ which **makes** bile.

Liver [1 mark]

Be careful, lots of people put gall bladder for this one. That is where bile is stored for a while, but not where it is produced.

(1 mark)

1 (a) (iii) A student has eaten a chicken for lunch. The chicken contains protein.

Describe how the protein is digested.

- chewing / muscle contraction / mechanical digestion [1 mark]
- protease enzymes [1 mark]
- in stomach / small intestine / duodenum / from pancreas [1 mark]
- (break down protein) into amino acids [1 mark]

You might also get a mark for mentioning the enzymes pepsin and trypsin which are found in the digestive system for digesting protein.

(3 marks)

(Total 8 marks)